



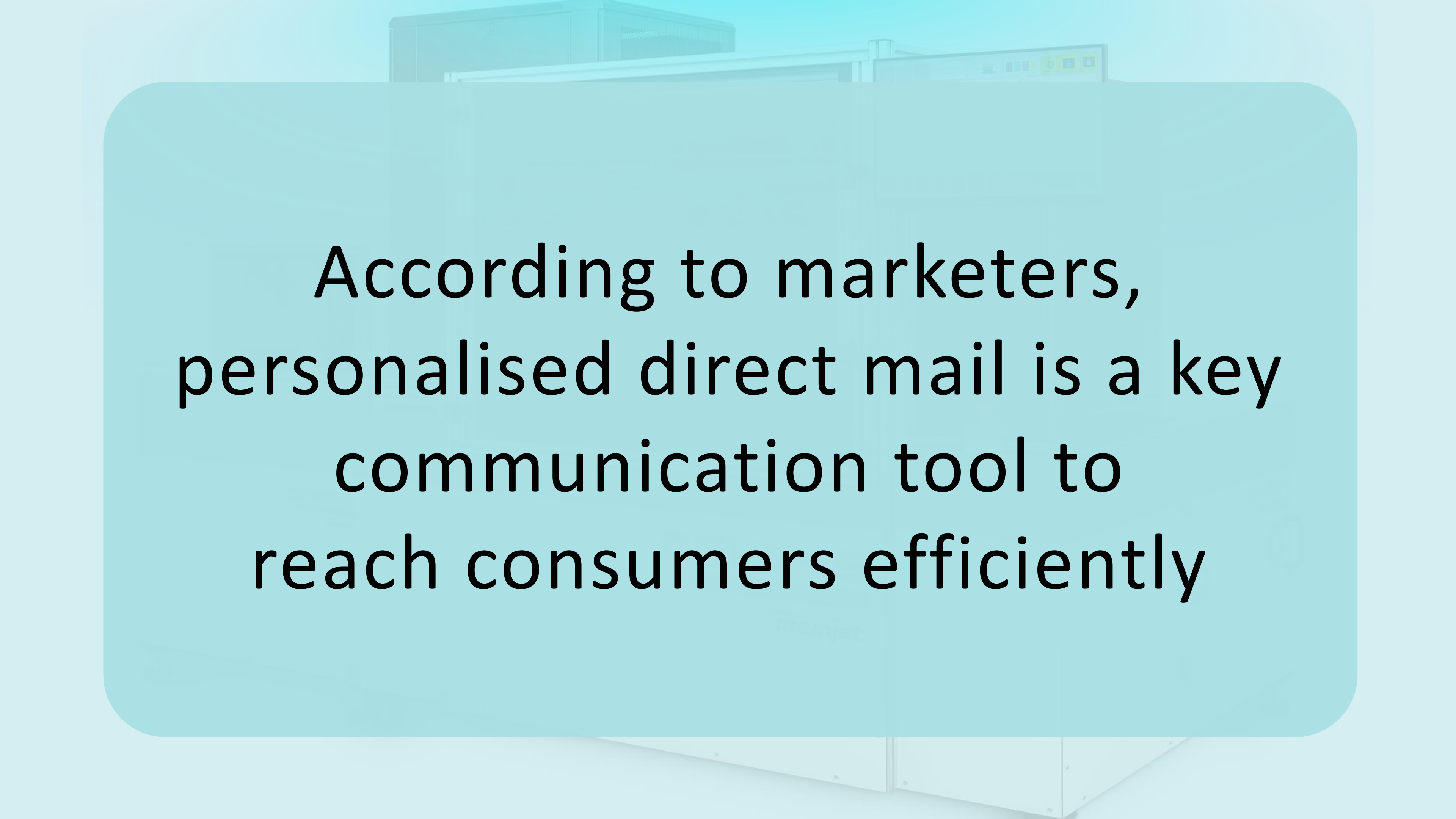
**PROCESSING  
AND STORAGE**

Presents



# OPHRYS IRICOLOR

A Fresh Momentum in Mailing



According to marketers,  
personalised direct mail is a key  
communication tool to  
reach consumers efficiently

10+ years  
experience in the printing  
industry

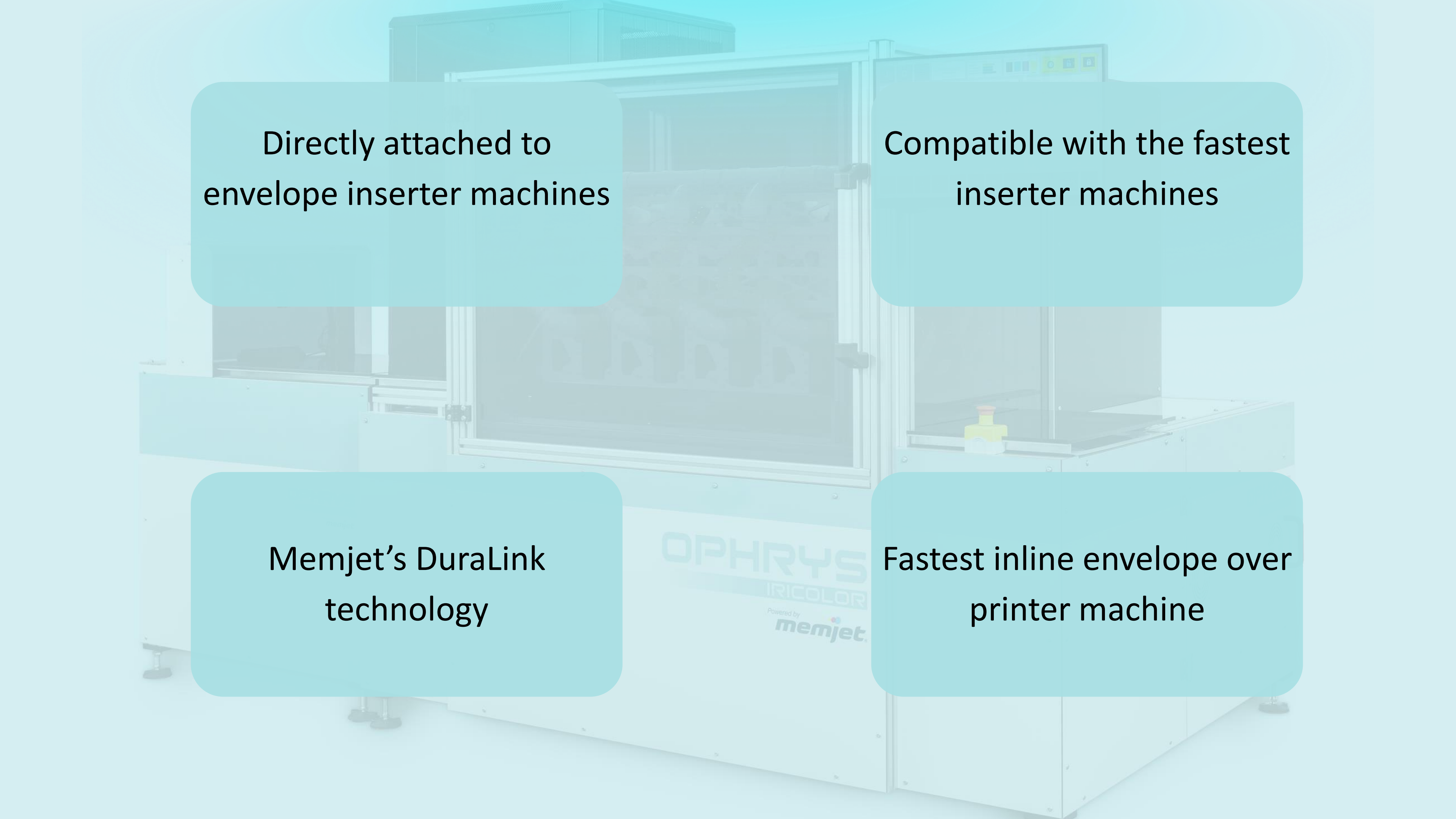
Innovative engineering team



Enhancing  
efficiency

Focus on  
sustainability

IRICOLOR  
Powered by  
memjet.

A large industrial envelope inserter machine, the OPHRYS IRI-COLOR model by Memjet. The machine is white with a large glass viewing window showing internal rollers and mechanisms. It is mounted on casters. The background is a light blue gradient.

Directly attached to  
envelope inserter machines

Compatible with the fastest  
inserter machines

Memjet's DuraLink  
technology

Fastest inline envelope over  
printer machine



**28.000**  
**ENVELOPES**  
**PER**  
**HOUR**



203.6

m/min



**OPHRYS**  
IRICOLOR

Powered by  
**memjet**<sup>®</sup>

Powered by  
Memjet's DuraLink technology



Capability  
for  
on-demand service

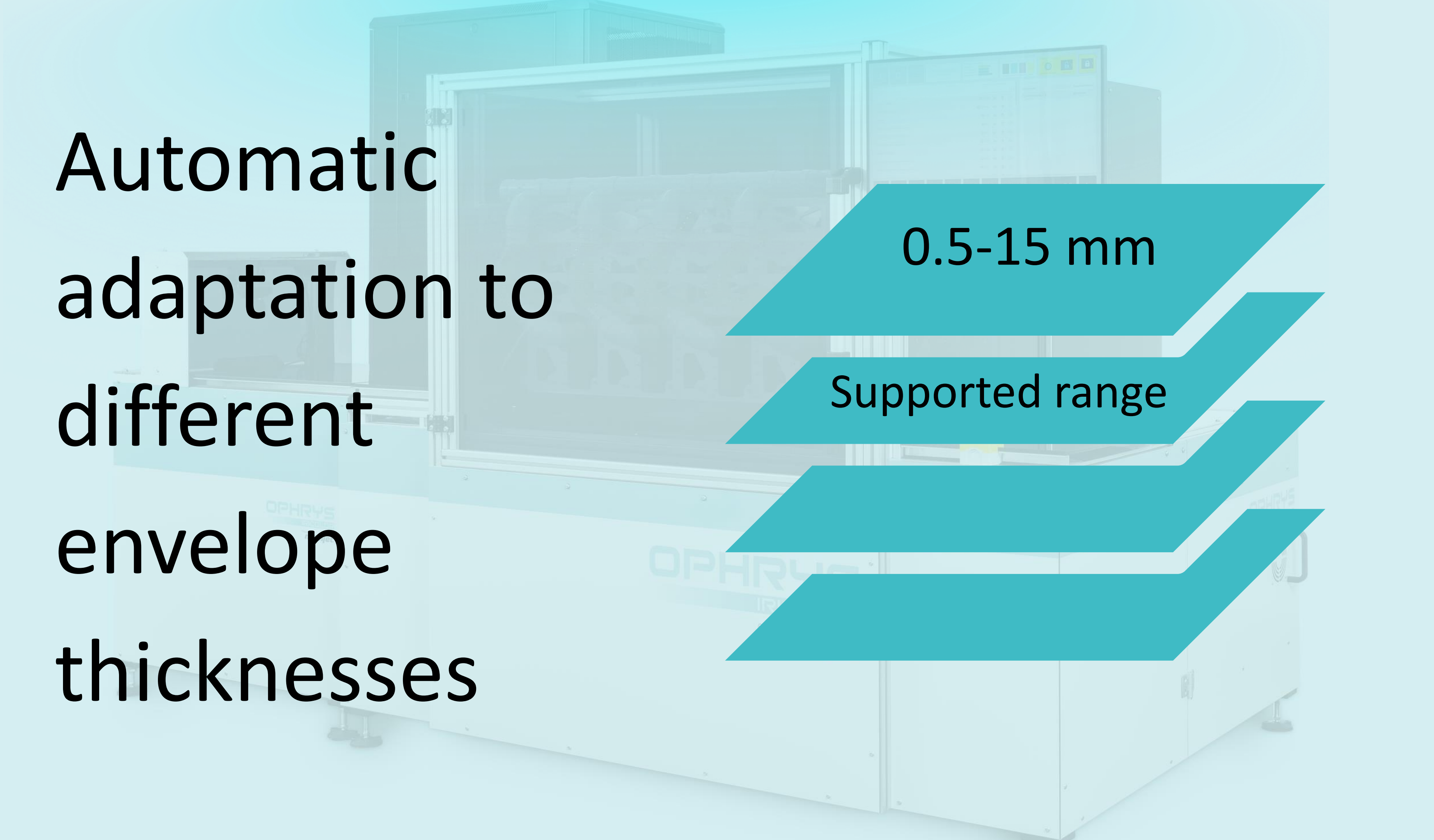


No storage of  
preprinted  
envelopes

Automatic  
adaptation to  
different  
envelope  
thicknesses

0.5-15 mm

Supported range



10X

Productivity



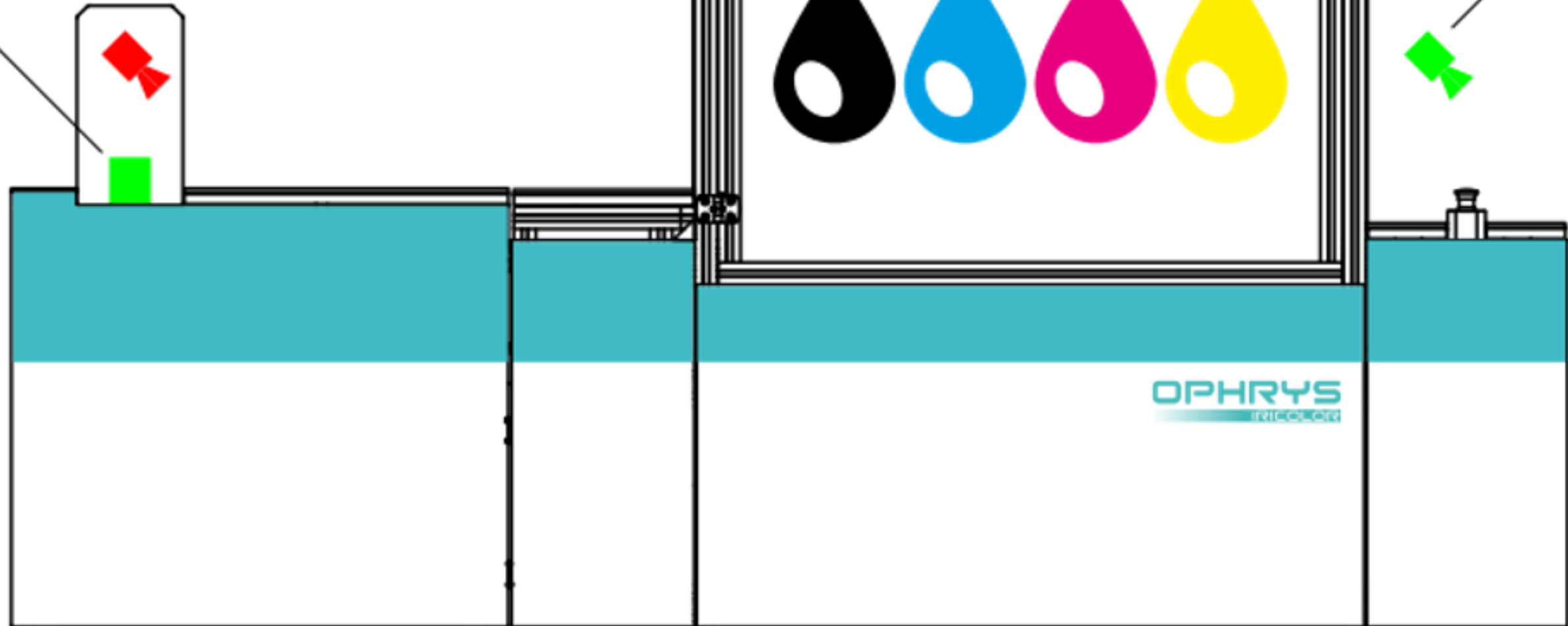
Operative costs  
decreased



# Operational Modes

**Thickness Measurement**

1. Micrometer measures the envelope thickness for automatic thickness compensation control.



**Full Color printing**

2. The print engine prints full-color static graphics and addressing.



**Post-Print Verification**

3. Vision System takes photos of each leaving mailpiece.

**Print Only Mode**

**Thickness Measurement**

1. Micrometer measures the envelope thickness for automatic thickness compensation control.

**Pre-Print Reading**

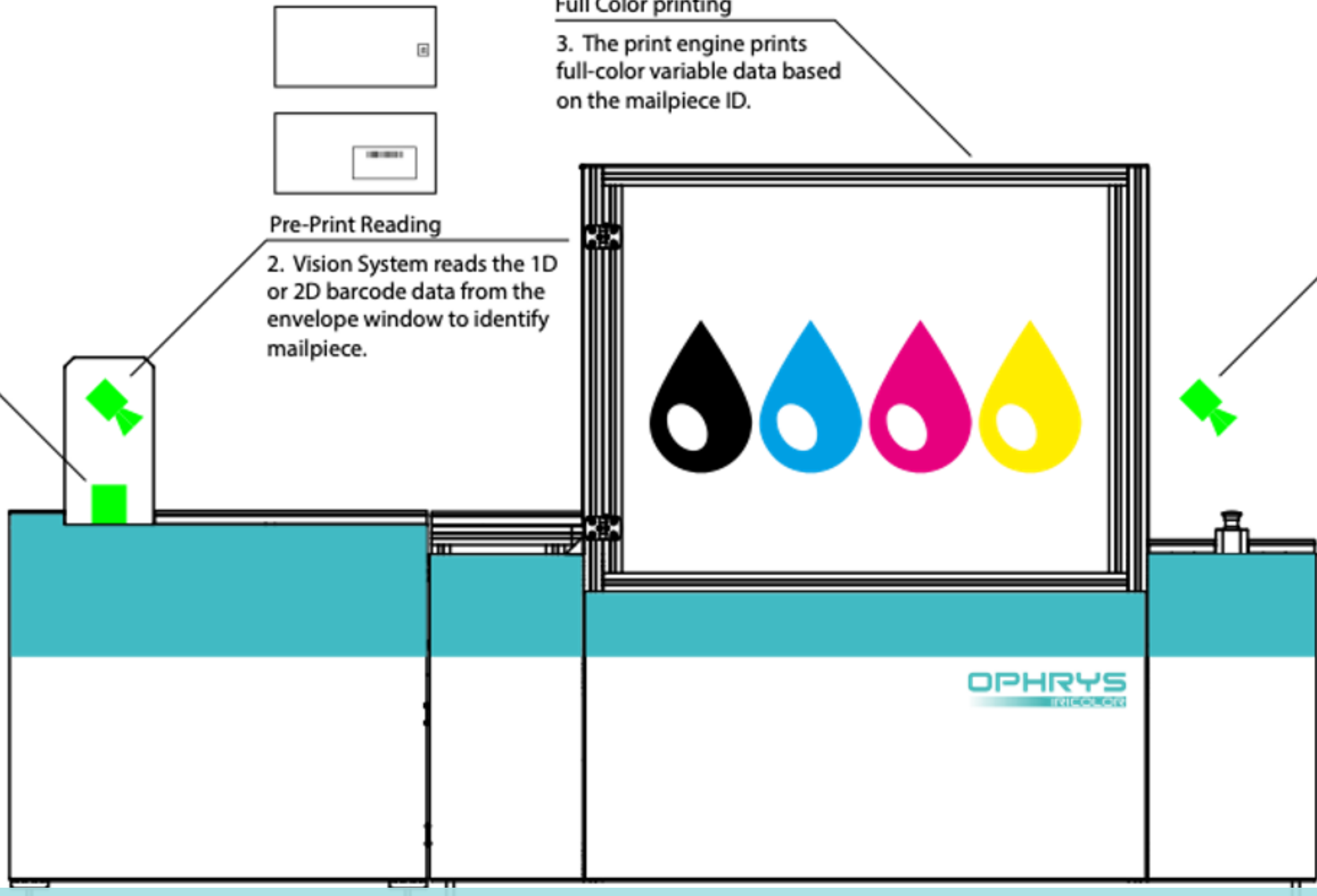
2. Vision System reads the 1D or 2D barcode data from the envelope window to identify mailpiece.

**Full Color printing**

3. The print engine prints full-color variable data based on the mailpiece ID.

**Post-Print Verification**

4. Vision System takes photos of each leaving envelope.



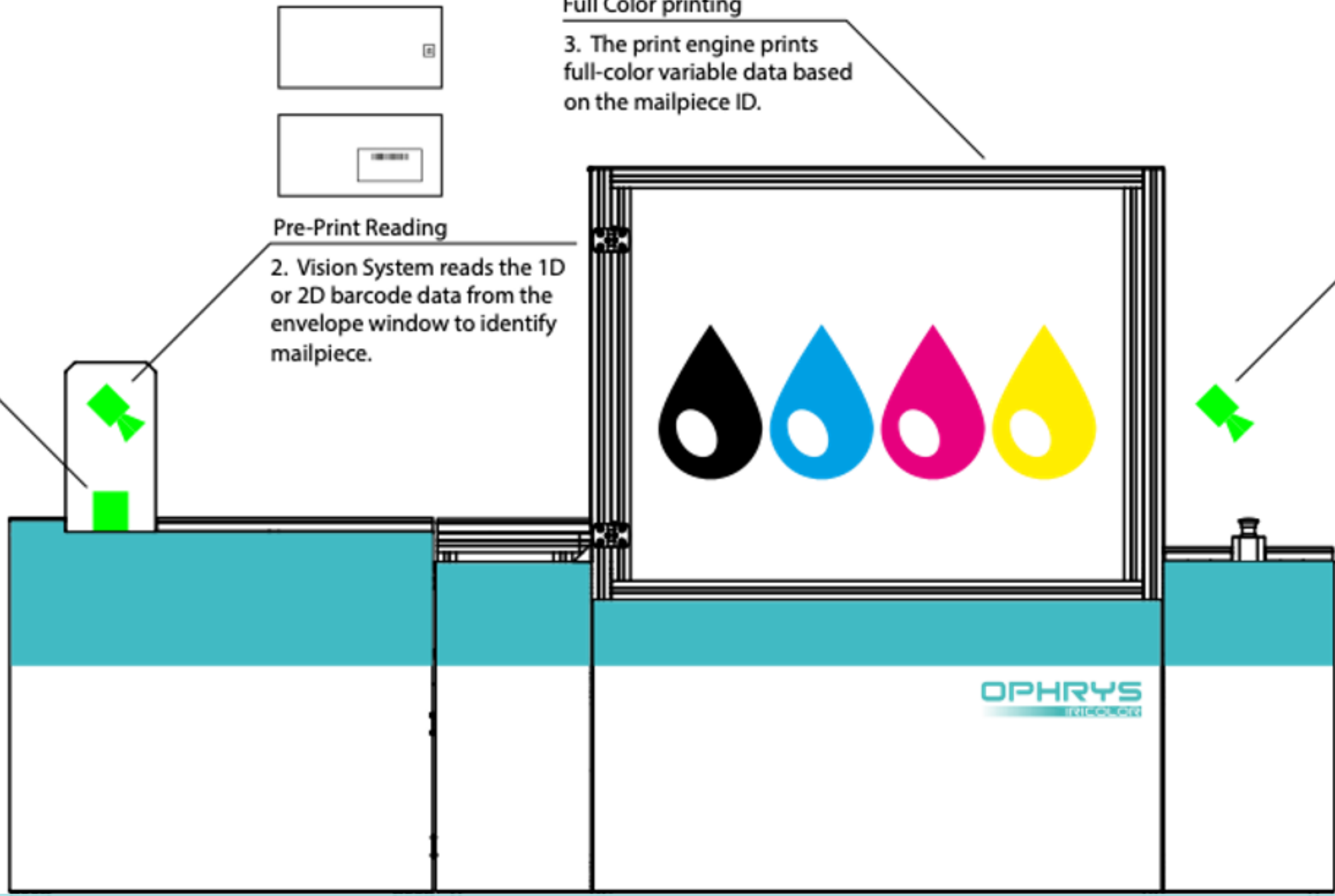
**Read & Print Mode**

**Thickness Measurement**  
1. Micrometer measures the envelope thickness for automatic thickness compensation control.

**Pre-Print Reading**  
2. Vision System reads the 1D or 2D barcode data from the envelope window to identify mailpiece.

**Full Color printing**  
3. The print engine prints full-color variable data based on the mailpiece ID.

**Post-Print Verification**  
4. Vision System verifies the printout based on the printed and window barcode.



# Read & Print & Verify Mode



# Flexible designs

# High-quality customized envelopes





# Print Quality

Clean  
transport system

Full bleed  
printing



Up to  
1600 x 1585 dpi

5x nozzle  
redundancy  
per color



# Production Control

Built-in envelope  
control

Real-time print process  
monitoring



Scheduled preventive  
maintenance

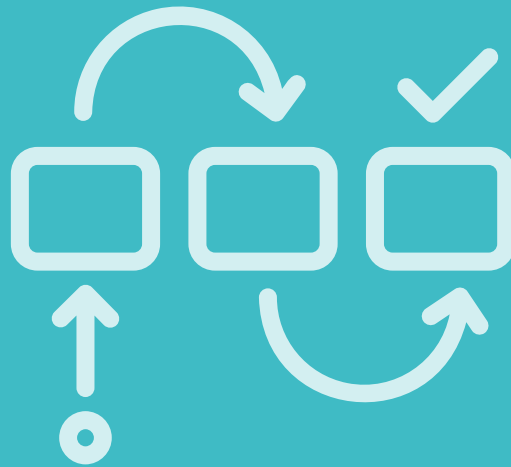
System health reports  
provided



# Workflow Innovation

Seamless integration  
with inserters

PDF workflow with  
built-in high-  
performance  
proprietary RIP



Computer vision  
systems for  
identification,  
verification, and  
production tracking.

Flexible design changes,  
print-on-demand

The background of the slide shows a server room with rows of server racks. A semi-transparent teal rectangle is overlaid on the image, containing the text. The text is in a large, bold, black sans-serif font.

# Training and On- Site Support

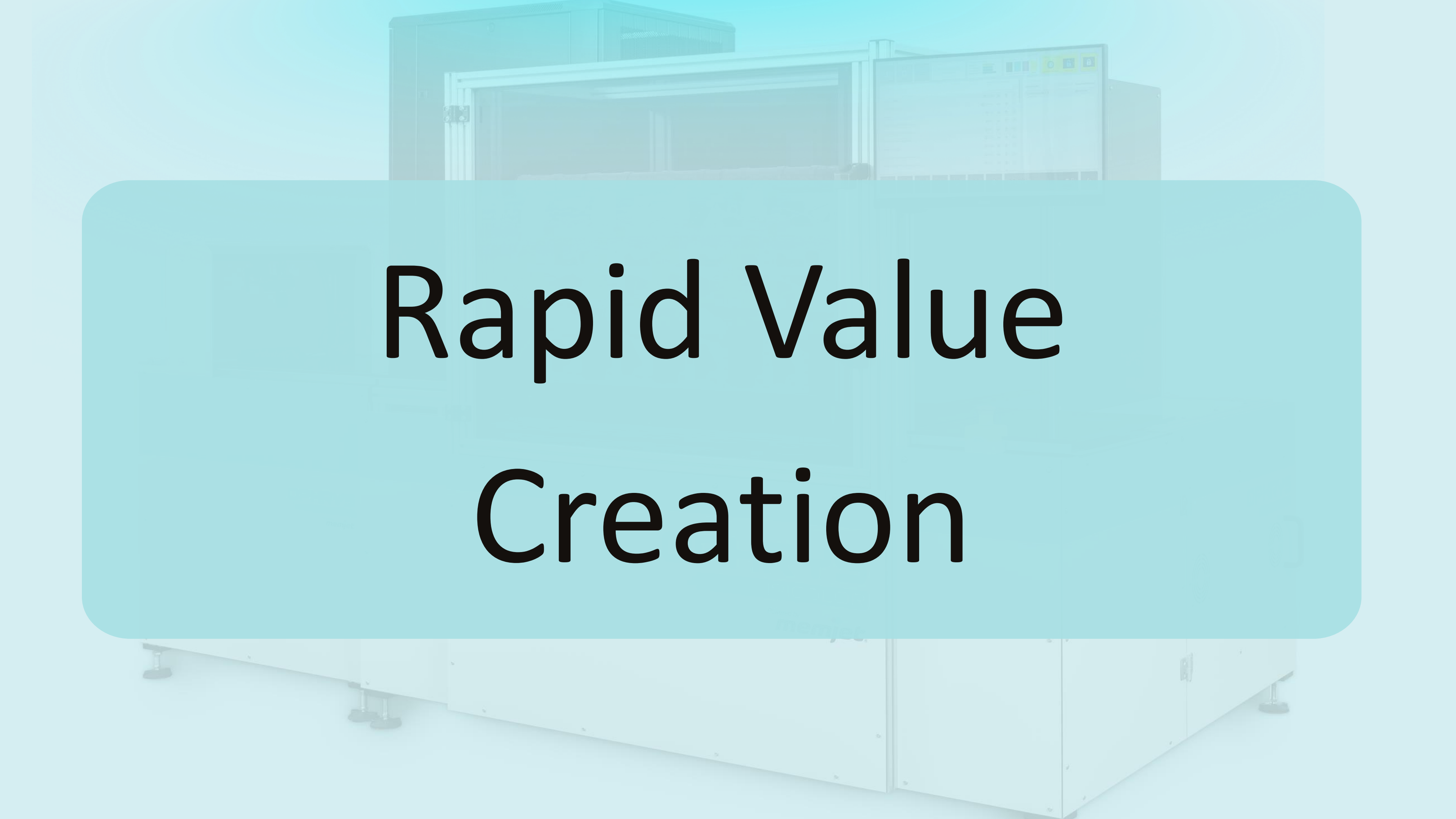
## Training

We provide hands-on technical training in maintenance and installation processes.



## Support

Remote support for mechanical, electrical, and software tasks. On-site support upon request for installations



# Rapid Value Creation

ROI could be  
1.5 years

Focusing on  
maximizing machine  
utilization



Significant cost  
reduction

Eliminating the need  
for pre-printed  
envelopes,  
reducing storage  
space and  
human expenses

Do You Have Any  
Questions?

Please call or text:

1-817-919-5042

E-mail:

[George@processingandstorage.com](mailto:George@processingandstorage.com)



**Thank You For  
Your Attention!**